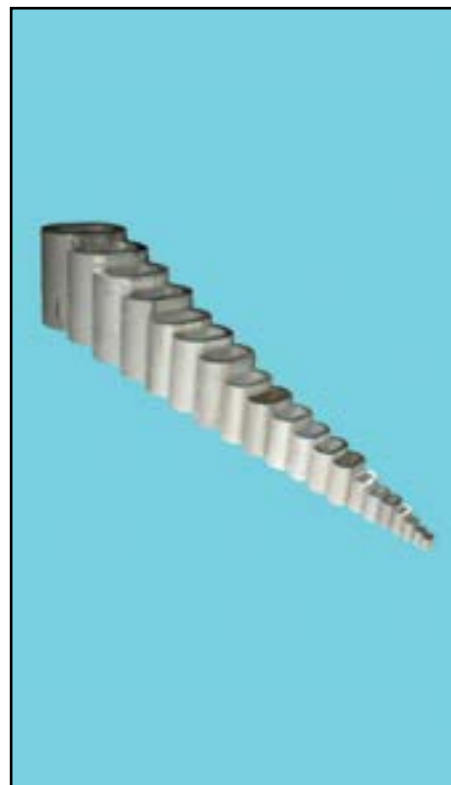
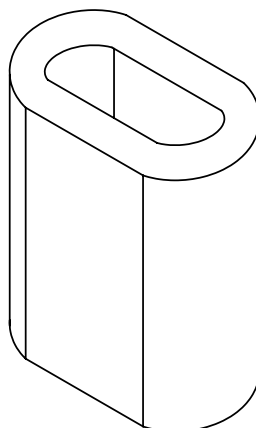


ALUMINIUM MACHINE SWAGES DIN3093

For use with galvanised wire rope.

Code	Fibre Core Rope Ø	Steel Core Rope Ø
GTA01	0.9 - 1.1	0.5 - 1.0
GTA015	1.2 - 1.6	1.1 - 1.4
GTA02	1.7 - 2.1	1.5 - 1.9
GTA025	2.2 - 2.6	2.0 - 2.4
GTA03	2.7 - 3.2	2.5 - 2.9
GTA035	3.3 - 3.7	3.0 - 3.4
GTA04	3.8 - 4.2	3.5 - 3.8
GTA045	4.3 - 4.7	3.9 - 4.3
GTA05	4.8 - 5.3	4.4 - 4.8
GTA06	5.4 - 6.3	4.9 - 5.8
GTA065	6.4 - 6.8	5.9 - 6.2
GTA07	6.9 - 7.4	6.3 - 6.7
GTA08	7.5 - 8.4	6.8 - 7.7
GTA09	8.5 - 9.5	7.8 - 8.6
GTA10	9.6 - 10.5	8.7 - 9.6
GTA11	10.6 - 11.6	9.7 - 10.5
GTA12	11.7 - 12.6	10.6 - 11.5
GTA13	12.7 - 13.7	11.6 - 12.5
GTA14	13.8 - 14.7	12.6 - 13.4
GTA16	14.8 - 16.8	13.5 - 15.3
GTA18	16.9 - 18.9	15.4 - 17.3
GTA20	19.0 - 21.0	17.4 - 19.2
GTA22	21.1 - 23.1	19.3 - 21.1

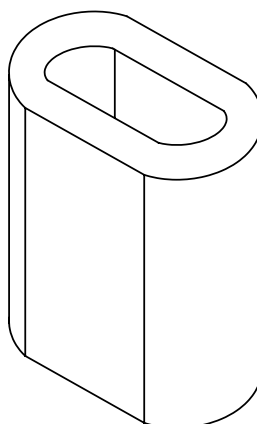
Larger sizes available on request



COPPER MACHINE SWAGES

For use with Stainless Steel wire rope.

Code	Fibre Core Rope Ø	Steel Core Rope Ø
GTC02	1.5 - 2.0	1.5 - 1.9
GTC025	2.1 - 2.5	2.0 - 2.4
GTC03	2.6 - 3.1	2.5 - 2.8
GTC035	3.2 - 3.6	2.9 - 3.3
GTC04	3.7 - 4.1	3.4 - 3.8
GTC045	4.2 - 4.6	3.9 - 4.2
GTC05	4.7 - 5.1	4.3 - 4.7
GTC06	5.2 - 6.1	4.8 - 5.6
GTC065	6.2 - 6.6	5.7 - 6.1
GTC07	6.7 - 7.1	6.2 - 6.6
GTC08	7.2 - 8.2	6.7 - 7.5
GTC09	8.3 - 9.0	7.6 - 8.2
GTC10	9.1 - 10.1	8.3 - 9.2
GTC11	10.2 - 11.2	9.3 - 10.2
GTC12	11.3 - 12.3	10.3 - 11.2
GTC13	12.4 - 13.4	11.3 - 12.2
GTC14	13.5 - 14.5	12.3 - 13.2
GTC16	14.6 - 16.1	13.3 - 14.7
GTC18	16.2 - 18.2	14.8 - 16.6
GTC20	18.3 - 20.2	16.7 - 18.4
GTC22	20.3 - 22.4	18.4 - 20.4



ALUMINIUM ROUND SWAGES

For use with Galvanised wire rope.

Code	Fibre Core Rope Ø	Steel Core Rope Ø
GTR03A	2.7 - 3.1	2.5 - 2.8
GTR04A	3.7 - 4.1	3.4 - 3.8
GTR05A	4.7 - 5.1	4.3 - 4.7
GTR06A	5.2 - 6.1	4.8 - 5.6
GTR08A	7.2 - 8.2	6.7 - 7.5
GTR10A	9.1 - 10.1	8.3 - 9.2
GTR12A	11.3 - 12.3	10.3 - 11.2
GTR13A	12.4 - 13.4	11.3 - 12.2
GTR14A	13.5 - 14.5	12.3 - 13.2
GTR16A	14.6 - 16.1	13.3 - 14.7
GTR18A	16.2 - 18.2	14.8 - 16.6

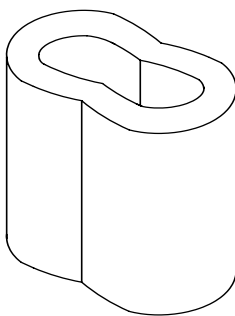


Our professional staff at the Brisbane factory can swage wire rope up to 22mm using our new 300 tonne press.

NICKEL PLATED COPPER HAND SWAGES

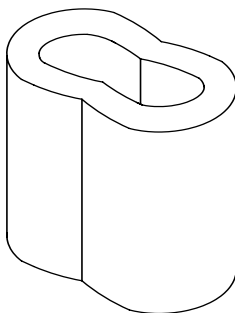
For use with Stainless Steel wire rope.

Code	Wire Ø
CP105NP	1.5
CP120NP	2.0
CP125NP	2.5
CP130NP	3.0
CP140NP	4.0
CP150NP	5.0
CP160NP	6.0
CP164NP	6.4
CP180NP	8.0
CP199NP	10.0

**COPPER HAND SWAGES**

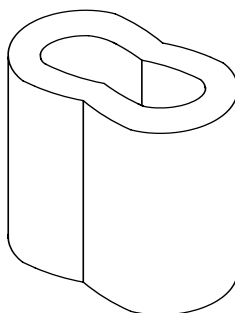
For use with Stainless Steel wire rope.

Code	Wire Ø
CP105	1.5
CP120	2.0
CP125	2.5
CP130	3.0
CP140	4.0
CP150	5.0
CP160	6.0
CP180	8.0
CP199	10.0

**ALUMINIUM HAND SWAGES**

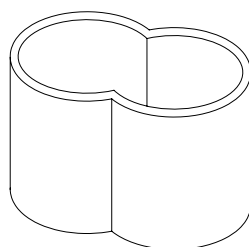
For use with Galvanised wire rope.

Code	Wire Ø
CP105A	1.5
CP125A	2.5
CP130A	3.0
CP135A	3.5
CP140A	4.0
CP150A	5.0
CP160A	6.0
CP180A	8.0

**COPPER SYNTHETIC ROPE SWAGES**

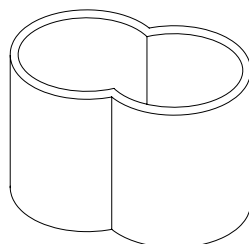
For use with Galvanised wire rope.

Code	Wire Ø
CP160R	6.0
CP180R	8.0
CP199R	10.0
CP114R	14.0

**ZINC PLATED COPPER SYNTHETIC ROPE SWAGES**

For use with Galvanised wire rope.

Code	Wire Ø
CP160R	6.0
CP180R	8.0
CP199R	10.0



**CLICK THIS
IMAGE TO
GO TO
THE FULL
CATALOGUE**



**CLICK THIS
IMAGE TO
RETURN
TO THE
WEBSITE
HOME PAGE**

