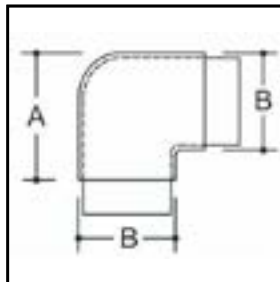
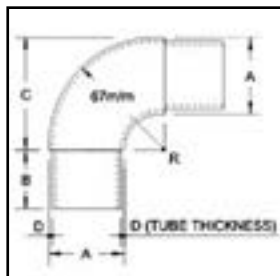


FLUSH JOINER 90° ELBOW AISI 316

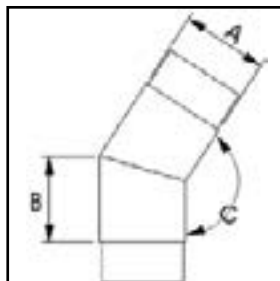
Code	Tube Ø	A	B
AW2002E	50.8	57.2	50.8

**FLUSH JOINER 90° RADIUS ELBOW AISI 316**

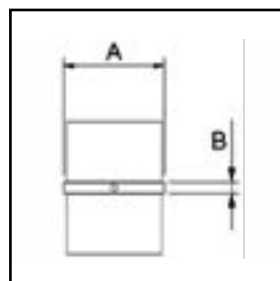
Code	Tube Ø	A	B	C	D
AW2002E-1E	50.8	50.8	24	100	1.6

**FLUSH JOINER 135° AISI 316**

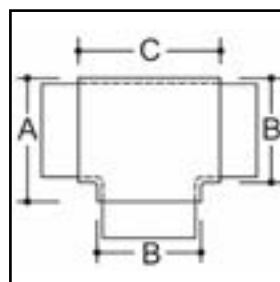
Code	Tube Ø	A	B	C
AW2003E	50.8	50.8	45	135°

**FLUSH JOINER IN LINE AISI 316**

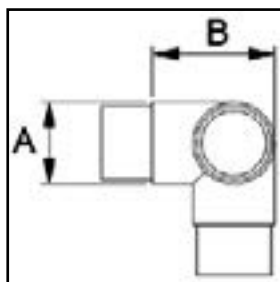
Code	Tube Ø	A	B
AW2004E	50.8	50.8	6

**FLUSH JOINER TEE AISI 316**

Code	Tube Ø	A	B	C
AW2005E	50.8	63.5	50.8	66.7

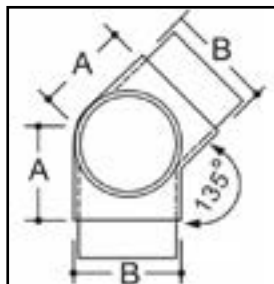
**FLUSH JOINER 90° TEE AISI 316**

Code	Tube Ø	A	B
AW2006E	50.8	50.8	57.15

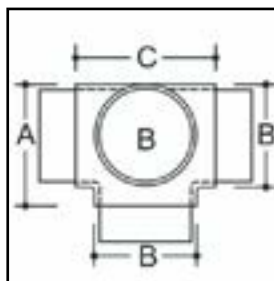


FLUSH JOINER 135° TEE AISI 316

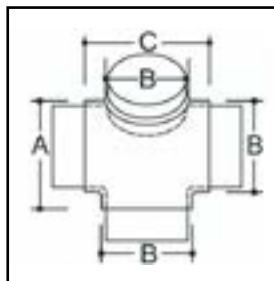
Code	Tube Ø	A	B
AW2007E	50.8	50.8	57.75

**FLUSH JOINER 4-WAY TEE AISI 316**

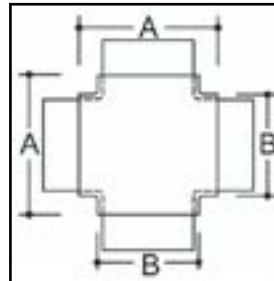
Code	Tube Ø	A	B	C
AW2008E	50.8	63.5	50.8	66.7

**FLUSH JOINER 135° STAR AISI 316**

Code	Tube Ø	A	B	C
AW2009E	50.8	57.1	50.8	66.67

**FLUSH JOINER 4-WAY STAR AISI 316**

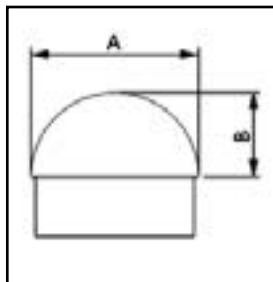
Code	Tube Ø	A	B
AW2010E	50.8	66.7	50.8



END CAP DOME AISI 316

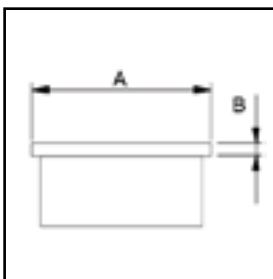
A popular cast true flat end cap, used for handrail ends or freestanding post tops.

Code	Tube Ø	A	B
AW2018A	50.8	50.8	25

**END CAP FLAT AISI 316**

A popular cast true flat end cap, used for handrail ends or freestanding post tops.

Code	Tube Ø	A	B
AW2019A	50.8	50.8	4

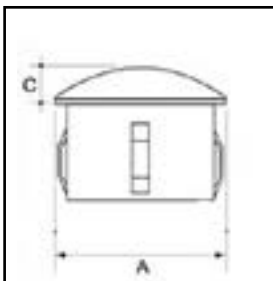
**END CAP LIGHT KNOCK-IN AISI 316**

Attractive self holding, slightly domed end cap.

A soft faced hammer is used to tap these in place.

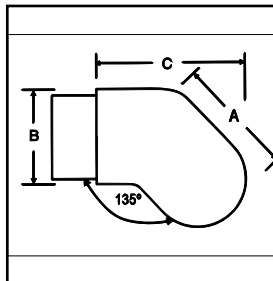
Suitable for handrail ends or freestanding post tops

Code	Tube Ø	A	C
AW2030A	50.8	50.8	9

**HANDRAIL END CAP 45° AISI 316**

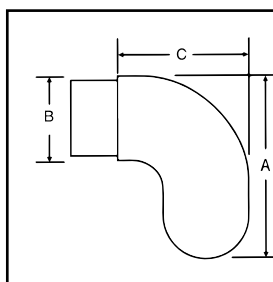
A 45° cast handrail end mainly used for stairway handrail terminations

Code	A	B	C
AW2025A	68.0	50.8	75

**HANDRAIL END CAP 90° AISI 316**

A 90° cast handrail end mainly used for stairway handrail terminations

Code	A	B	C
AW2026A	90.0	50.8	66

**316 STAINLESS STEEL TUBE**

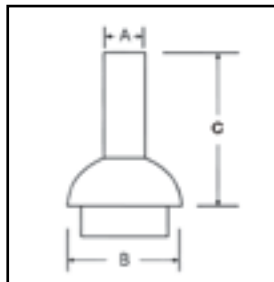
Code	Size	Wall	
TUBE50816	50.8mm	1.6mm	Round - Polished or Satin
TUBE25416	25.4mm	1.6mm	Round - Polished or Satin
	40mm x 40mm	1.6mm	Square - Polished or Satin
	50mm x 50mm	1.6mm	Square - Polished or Satin
Other sizes available on request			



POST REDUCER DOME AISI 316

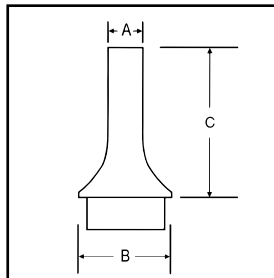
Flush fitting slimline post top reducer for a decorative look.

Code	A	B	C
AW2012A	25.4	50.8	92

**POST REDUCER TAPERED AISI 316**

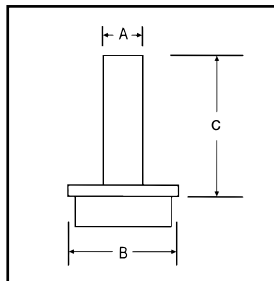
Flush fitting slimline post top reducer for a decorative look.

Code	A	B	C
AW2020A	25.4	50.8	85

**POST REDUCER FLAT AISI 316**

Flush fitting slimline post top reducer for a decorative look.

Code	A	B	C
AW2022A	25.4	50.8	93

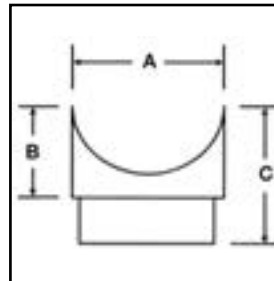
**PERPENDICULAR JOINER FLUSH FITTING AISI 316**

Join posts to a horizontal handrail or join horizontal handrails to vertical posts .

All joiners are radiused to suit the top handrail as below specifications .

Fix joiners to the top handrail with screws or rivets through the underneath internal.

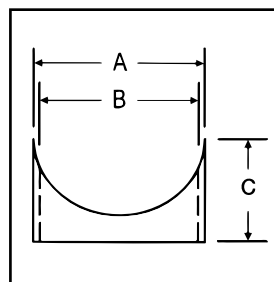
Code	A	B	C
AW2027A	50.8	29	55

**PERPENDICULAR JOINER EXTERNAL CAP AISI 316**

Suitable for joining vertical posts to horizontal handrails.

The external fit negates the need for a true flat tube cut

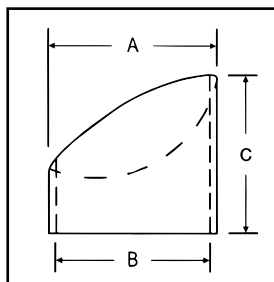
Code	A	B	C
AW20313A	56.0	51.5	38

**PERPENDICULAR JOINER 37° EXTERNAL CAP AISI 316**

Suitable for joining vertical posts to angled stairway handrails.

The external fit negates the need for a true flat tube cut

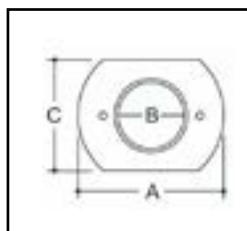
Code	A	B	C
AW20314A	56.0	51.5	62



OBLONG BASE PLATE / FLANGE AISI 316

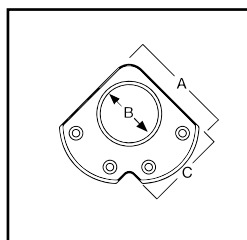
Suitable for fixing handrails in between timber, masonry or steel posts..
Heavy duty cast 2 hole slab base. Use for floor mounting where space is limited

Code	A	B	C
AW2014A	101.6	50.8	70.5

**CORNER BASE PLATE FLANGE AISI 316**

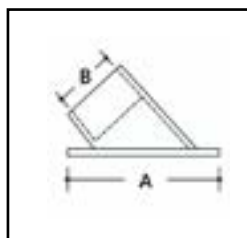
Popular heavy duty cast 4 hole corner base plate
Suitable for fixing posts to flooring or handrails in corner applications.

Code	A	B	C
AW2014C	101.0	50.8	70

**WALL STOP FLANGE AISI 316**

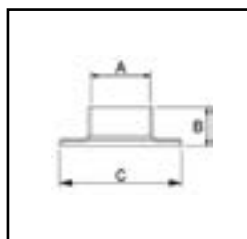
Suitable for fixing handrails down stairways between timber, masonry or steel posts.
3 hole cast angled flange. Flange can be turned 180° to complete the stairway handrail

Code	A	B	Angle
AW2015A	50.8	114.3	135°

**ROUND BASE PLATE FLANGE AISI 316**

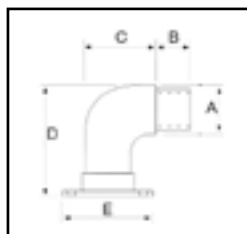
Popular heavy duty cast 3 hole base plate
Suitable for fixing posts to handrails or handrails to walls or posts.

Code	A	B	C
AW2016A	50.8	34	126

**OUTSIDE WALL FLANGE, Round Base Type 1 AISI 316**

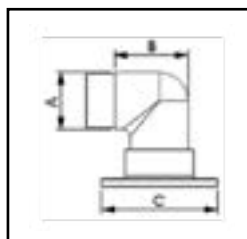
Popular heavy duty cast 3 hole base plate
Suitable for fixing handrails to walls or posts.

Code	A	B	C	D	E
AW2024A	50.8		57.2		101.6

**OUTSIDE WALL FLANGE, Round Base Type 2 AISI 316**

Popular heavy duty cast 3 hole base plate
Suitable for fixing handrails to walls or posts.

Code	A	B	C
AW20803A	50.8	64.2	101.6

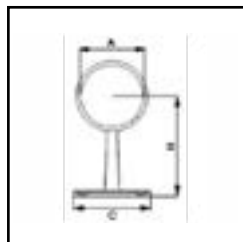


HANDRAIL SUPPORT TYPE 3 AISI 316

Concealed base handrail centre support.

Designed to be mounted on top of a nub wall, vertical wall or floor.

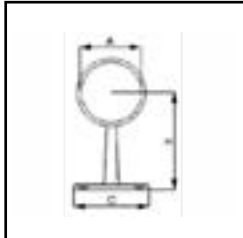
Code	A	H	C
AW20602A	50.8	84	64

**HANDRAIL SUPPORT TYPE 4 AISI 316**

Concealed base handrail end support.

Designed to be mounted on top of a nub wall, vertical wall or floor.

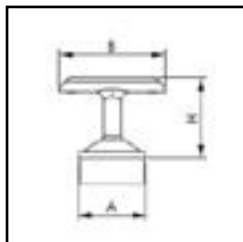
Code	A	H	C
AW20603A	50.8	84	64

**HANDRAIL SUPPORT "Radiused" TYPE 2 AISI 316**

Fixed handrail support.

For fixing posts to handrails.

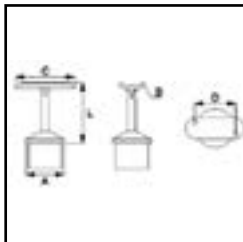
Code	A	B	H
AW20710RA	50.8	80	50

**ADJUSTABLE HANDRAIL SUPPORT Radiused AISI 316**

Fully adjustable handrail support.

For fixing stairway posts to angled radius handrails.

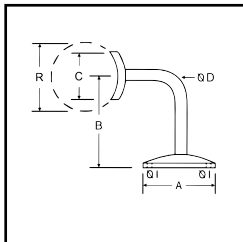
Code	A	B	C	D	L
AW20710RB	50.8	25.4	65	45	66.5

**HANDRAIL SUPPORT Radiused AISI 316**

Three hole handrail support designed for fixing to any type of wall.

Radiused top with countersunk holes. Attached handrail without welding.

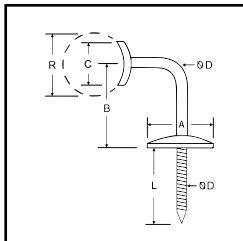
Code	A	B	C	D	I	R
AW2028A	63.0	85	31	12	5.5	50.8

**HANDRAIL SUPPORT W/- Coach Screw Radiused AISI 316**

Coach screw fix handrail support for fixing to timber stud wall

Radiused top with countersunk holes. Attached handrail without welding.

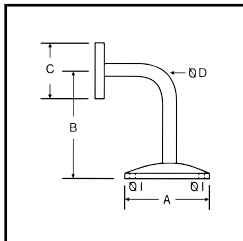
Code	A	B	C	D	I	L	R
AW2028A-S	63.0	85	31	12	5.5	60	50.8

**HANDRAIL SUPPORT Flat Top AISI 316**

Three hole handrail support designed for fixing to any type of wall.

Flat top with countersunk holes. Attached handrail without welding.

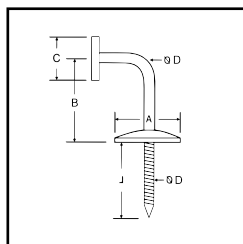
Code	A	B	C	D	I
AW2029A	63.0	85	31	12	5.5



HANDRAIL SUPPORT W/- Coach Screw Flat Top AISI 316

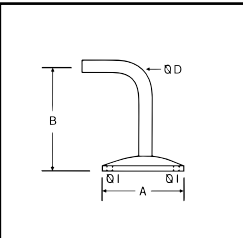
Coach screw fix handrail support for fixing to timber stud wall
Flat top with countersunk holes. Attached handrail without welding.

Code	A	B	C	D	I	L
AW2029A-S	63.0	85	31	12	5.5	60

**HANDRAIL SUPPORT No Top AISI 316**

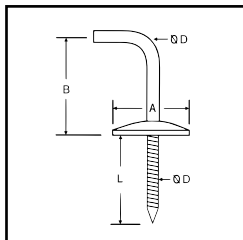
Three hole handrail support designed for fixing to any type of wall.
Unradiused fitting allows any handrail to be welded or fastened to the bracket.

Code	A	B	D	I
AW2028A-B	63.0	85	12	5.5

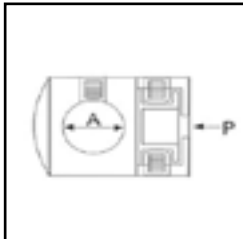
**HANDRAIL SUPPORT W/- Coach Screw No Top AISI 316**

Coach screw fix handrail support for fixing to timber stud wall
Unradiused fitting allows any handrail to be welded or fastened to the bracket.

Code	A	B	D	L
AW2028A-S-B	63.0	85	12	60

**CROSS SADDLE AISI 316**

Code	A	P
AW0474A	12.7	50.8
AW0574A	15.9	50.8

**GLASS CLIP AISI 316**

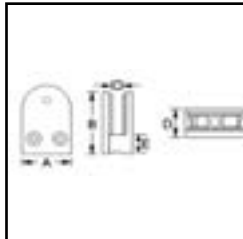
Suitable for 8mm - 12mm glass.
Gaskets made from EPDM included.

Code	A	B	C	D	E
AW2023A	50.8	13	50.8	5.5	22

**GLASS CLAMP D-Front - Flat Back AISI 316**

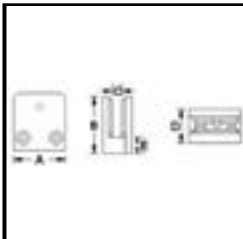
Suitable for 8mm - 12mm glass.
Gaskets made from EPDM included.

Code	A	B	C	D	E
AW4050D	45.0	63		27	16

**GLASS CLAMP Square Type AISI 316**

Suitable for 8mm - 12mm glass.
Gaskets made from EPDM included.

Code	A	B	C	D	E
AW4545S	55.0	55		33	16



**CLICK THIS
IMAGE TO
GO TO
THE FULL
CATALOGUE**



**CLICK THIS
IMAGE TO
RETURN
TO THE
WEBSITE
HOME PAGE**

