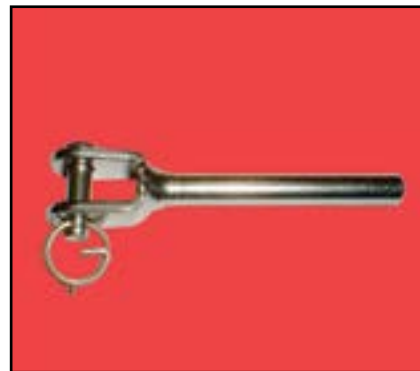
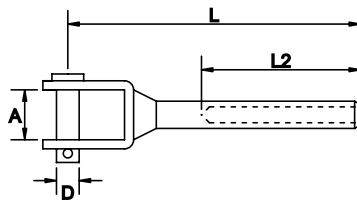
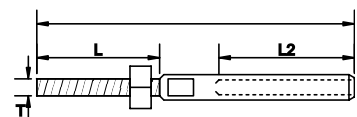


**FORK TERMINAL SWAGE AISI 316**

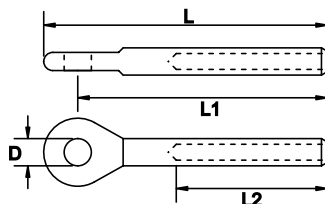
Code	Rope Ø	D	L1	L2	A	MWL
7803-025	2.5	5	55	24	7	175
7803-03	3.2	5	66	32	8.5	313
7803-04	4.0	8	75	45	12	450
7803-05	5.0	9	86	52	13	663
7803-06	6.0	12	107	66	14	1000
7803-08	8.0	14	147	77	16	1813
7803-10	10.0	16	155	93	18	2100

**THREADED TERMINAL SWAGE AISI 316**

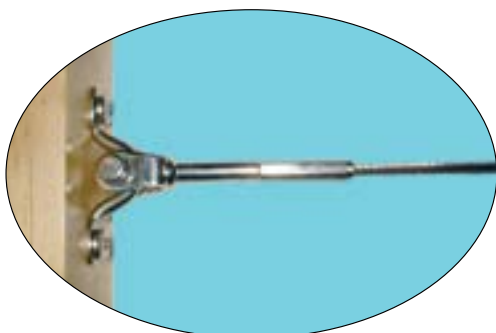
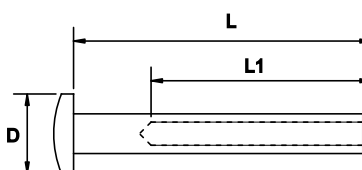
Code	Rope Ø	T	L	L1	L2
7801-0255	2.5	M5	72	40	22
7801-0256	2.5	M6	100	38	46
7801-035	3.2	M5	95	41	37
7801-036	3.2	M6	98	48	37
7801-046	4.0	M6	108	48	49
7801-058	5.0	M8	123	58	52
7801-0610	6.0	M10	163	86	64
7801-0612	6.0	M12	163	80	61
7801-0812	8.0	M12	165	64	71
7801-0816	8.0	M16	225	90	92
7801-1016	10.0	M16	192	80	93
7801-1216	12.0	M16	225	90	92

**EYE TERMINAL SWAGE AISI 316**

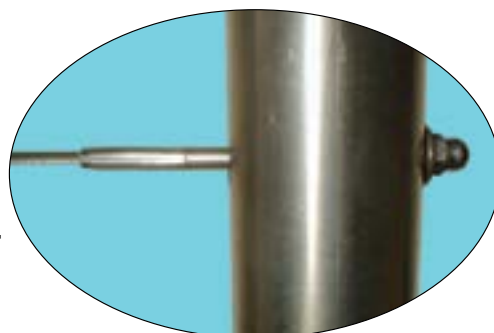
Code	Rope Ø	D	L	L1	L2	MWL
7802-025	2.5	5.5	54	48	32	213
7802-032	3.2	6.5	62	55	37	250
7802-04	4.0	8.5	76	66	45	338
7802-05	5.0	10.5	89	77	51	625
7802-06	6.0	13.0	108	93	65	1125
7802-08	8.0	14.5	133	118	83	1675

**BUTTON HEAD TERMINAL SWAGE AISI 316**

Code	Rope Ø	D	L	L1	MWL
7804-025	2.5	9.5	35	22	250
7804-032	3.2	12.5	50	37	475

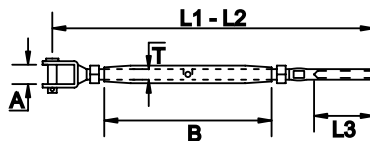


Swage  
Terminals can  
be pressed in  
our factory or  
on site using our  
hire presses.

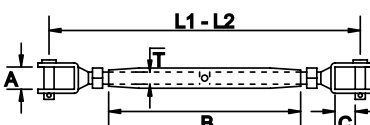


**RIGGING SCREW JAW + SWAGE AISI 316**

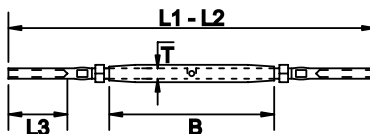
Code	Rope Ø	T	A	B	L1	L2	L3	MWL
312T-525	2.5	M5	8	80	140	206	22	150
312T-532	3.2	M5	8	80	155	221	37	150
312T-632	3.2	M6	9	93	174	253	37	250
312T-804	4.0	M8	10	112	242	337	49	250
312T-105	5.0	M10	12	125	277	389	52	350
312T-126	6.0	M12	15	150	339	459	61	550
312T-168	8.0	M16	20	195	478	618	71	

**RIGGING SCREW JAW + JAW AISI 316**

Code	T	A	B	C	L1	L2	MWL
312J-05	M5	8.0	80	9	124	190	188
312J-06	M6	9.0	93	10	150	230	350
312J-08	M8	10.0	112	10	170	265	550
312J-10	M10	12.0	125	13	198	310	863
312J-12	M12	15.0	150	21	245	365	1250
312J-16	M16	20.0	195	31	345	485	2000

**RIGGING SCREW SWAGE + SWAGE AISI 316**

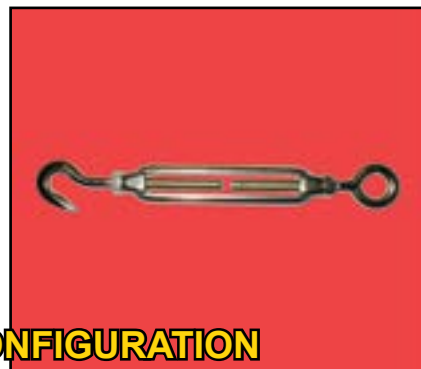
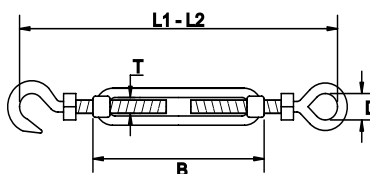
Code	Rope Ø	T	B	L1	L2	L3	MWL
312TT-532	3.2	M5	80	206	272	37	150
312TT-632	3.2	M6	93	235	314	37	250

**TURNBUCKLE AISI 316**

(Insert "H", "E", or "HE" for Hook, Eye or Hook+Eye)

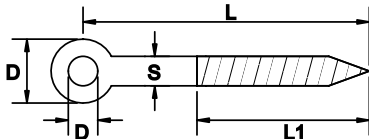
Code	T	L1	L2	D	B	MWL (Eye)
311( )-05	M5	120	170	10	69	170
311( )-06	M6	155	223	11	90	375
311( )-08	M8	190	280	14	120	575
311( )-10	M10	230	337	17	150	775
311( )-12	M12	303	452	20	200	1100
311( )-16	M16	380	584	21	250	2025

NB: MWL for Hook = 20% of MWL (Eye)

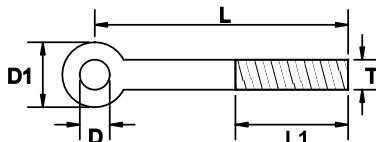
**ALSO AVAILABLE IN "HOOK-HOOK" & "EYE-EYE" CONFIGURATION**

**LAG EYE SCREW AISI 316**

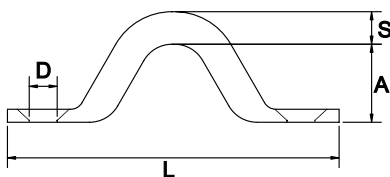
Code	S	L	L1	D	D1
3182-0660	6	72	40	6.2	14
3182-0860	8	77	40	8.4	18
3182-1080	10	100	55	10.5	20
3182-1210	12	120	65	12.5	25

**METRIC EYE BOLT AISI 316 DIN444**

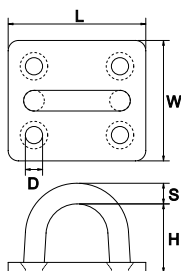
Code	T	L	L1	D	D1
444-635	M6	35	19	6	14
444-655	M6	55	19	6	14
444-680	M6	80	19	6	14
444-880	M8	80	23	8	18
444-8100	M8	100	23	8	18
444-8140	M8	140	23	8	18
444-10120	M10	120	28	10	20
444-10150	M10	150	28	10	20
444-12200	M12	200	33	12	25

**SADDLE (EYE STRAP) AISI 304**

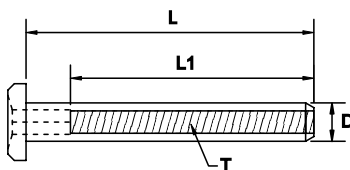
Code	S	A	D	L	L1
322-04	4	12	3.3	40	33
322-05	5	13	4.2	50	42
322-06	6	15	5.2	60	52
322-08	8	17	6	64	51

**PAD EYE AISI 304**

Code	S	L	W	H	D	MWL
321-06	6	40	34	20	4.4	250
321-08	8	50	39	23	5.7	400

**ALLEN KEY HEAD TENSIONER AISI 304**

Code	T	L	L1	D
HTEN-6	M6	40	30	8

**TIMBER THREADED INSERT**

Code	Rope Ø	Length	Internal Thread	External Timber Thread
AWTIM6RH	3.2	32mm	RH M6	RH 8mm
AWTIM6LH	3.2	32mm	LH M6	LH 8mm



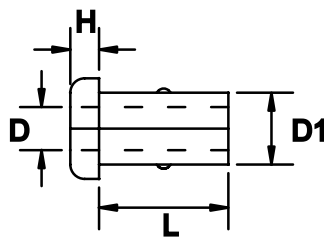
NEW STYLE!

## NYLON GROMMET SPLIT

Code	Rope Ø	H	D	D1	L	Colour
106874FB	3.2 - 5.0	2.5	6.2	8.5	10	Black
106874FC	3.2 - 5.0	2.5	6.2	8.5	10	Clear
106874FS	3.2 - 5.0	2.5	6.2	8.5	10	Silver

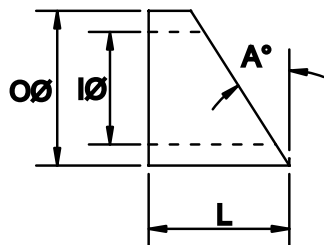
## NEW "SNUB" GROMMET

Code	Rope Ø	H	D	D1	L	Colour
AW2034	3.2	2.3	3.5	9.1	8.5	Black



## 35° BEVELLED WASHER CHROME PLATED

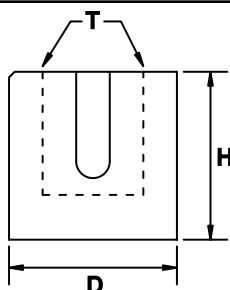
Code	L	IØ	OØ	A
5351-06	9.5	6.3	11	35°
5351-08	9.5	8.1	11	35°



## CROSS CONNECTOR AISI 304

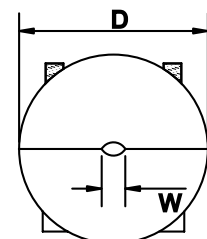
Code	Rope Ø	D	H	T
266-032	3.2	18.0	19	M10
266-04	4.0	18.0	19	M10

**FULLY THREADED CROSS  
CONNECTOR FOR BOLTING TO  
WALLS AND FLAT SURFACES.**



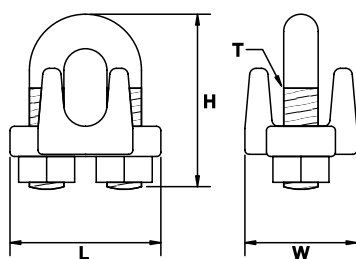
## WIRE ROPE STOP AISI 304

Code	Rope Ø	D	W
6503	3.2	18.0	3
6504	4.0	18.0	4



## WIRE ROPE GRIP AISI 316

Code	Rope Ø	T	L	W	H
260-03	3 - 4	M4	23	12	25
260-05	5	M6	26	15	30
260-06	6	M8	32	18	38
260-08	8	M8	34	20	38
260-10	10	M10	40	22	50
260-13	13	M11	48	25	61
260-16	16	M12	56	29	71
260-20	20	M16	60	31	76
260-22	22	M16	70	37	91
260-25	25	M16	76	42	101



## SUSPENSION BARREL

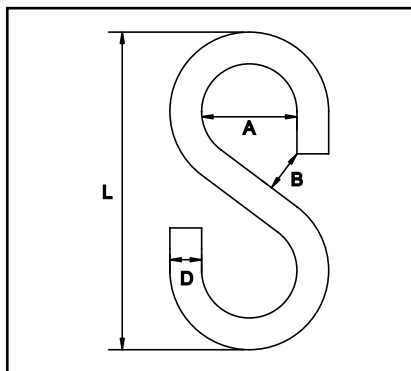
SB16 - Suits 1.6mm Wire Rope

Perfect for hanging light fittings,  
signage etc.

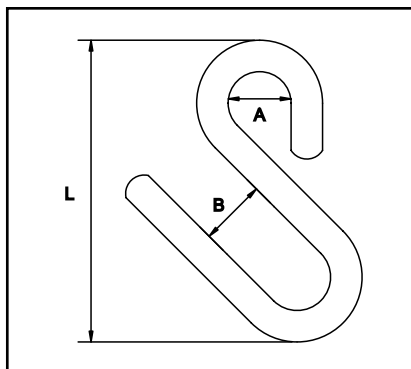


**"S" HOOK AISI 304**

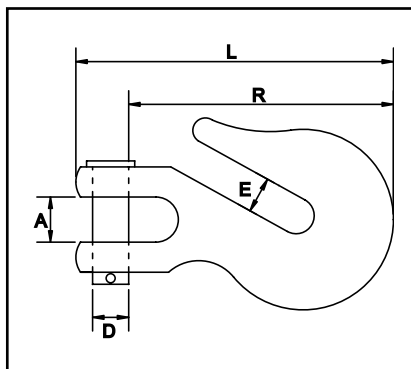
Code	D	L	A	B	MWL
800-03	3	30	9	4	6.25
800-04	4	40	12	6	12.8
800-05	5	50	15	8	30
800-06	6	60	18	9	38
800-08	8	82	24	12	62.5

**ASSYMETRIC "S" HOOK AISI 304**

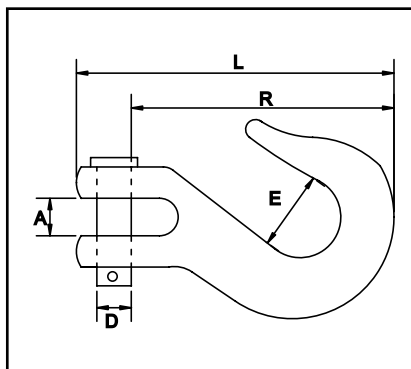
Code	D	L	A	B	MWL
866-05	5	50	9	8.5	38
866-06	6	50	12	11	50
866-08	8	75	16	15	100
866-09	9	85	18	17	163

**CLEVIS PIN GRAB HOOK AISI 316**

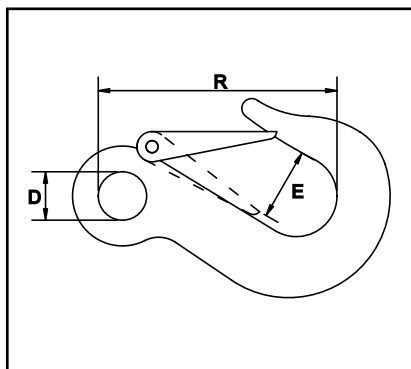
Code	D	L	R	A	E	MWL
330-06	9	80	45	10	9	525
330-08	11	95	55	12	11	775
330-10	12	106	61	15	12	1000
330-13	16	140	80	16	16	1838

**CLEVIS PIN SLIP HOOK AISI 316**

Code	D	L	R	A	E	MWL
331-06	9	100	65	11	22	500
331-08	11	112	70	12	23	775
331-10	12	118	83	15	30	1000
331-13	16	143	112	17	35	1400

**EYE SLIP HOOK W/SAFETY CATCH AISI 316**

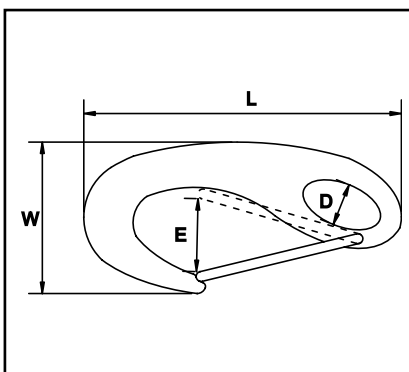
Code	D	L	R	E	MWL
325-06	13	90	63	15	375
325-08	16	105	73	21	725
325-10	18	122	84	25	800
325-13	23	160	111	27	1350



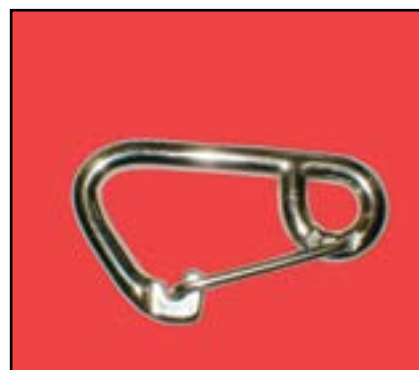
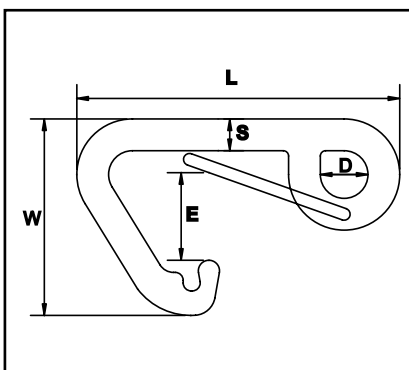


**CAST SNAP HOOK AISI 316**

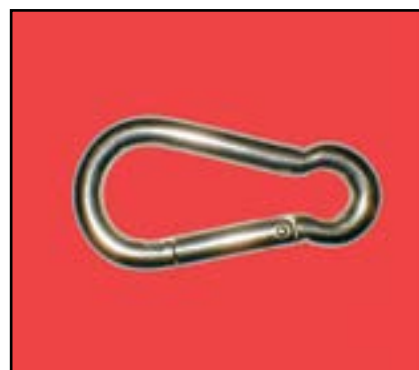
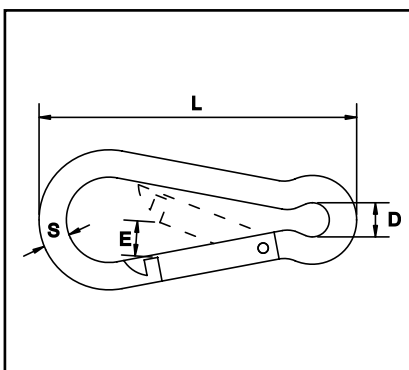
Code	D	L	W	E	MWL
2470-05	6	50	23	10	55
2470-07	10	70	30	12	88
2470-10	14	100	46	20	225

**ASSYMETRIC SPRING HOOK AISI 316**

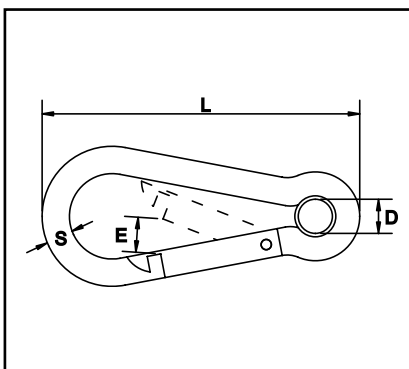
Code	S	D	L	W	E	MWL
2430-06	6	7	61	35	10	188
2430-08	8	11	81	48	13	438
2430-10	10	13	102	58	15	563
2430-12	12	18	122	70	21	913

**SPRING HOOK AISI 316**

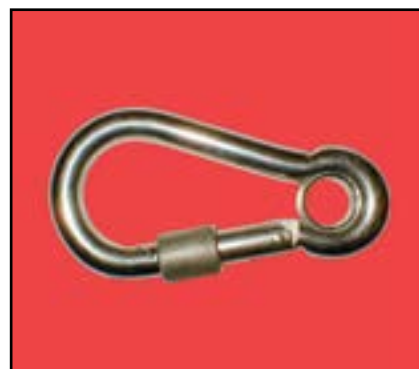
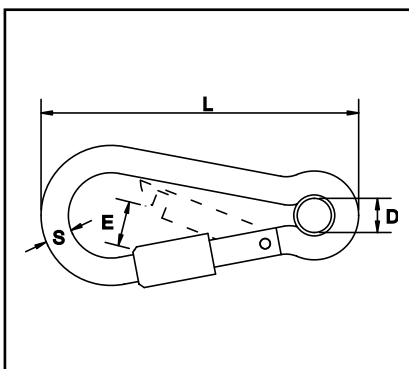
Code	S	L	E	D	MWL
2450X-05	5	50	7	8	142
2450X-06	6	60	9	10	167
2450X-08	8	77	11	12	217
2450X-10	10	100	14	16	287

**SPRING HOOK W/EYELET AISI 316**

Code	S	L	E	D	MWL
2450-05	5	50	7	8	142
2450-06	6	60	9	10	167
2450-08	8	77	11	12	217
2450-10	10	100	14	16	287

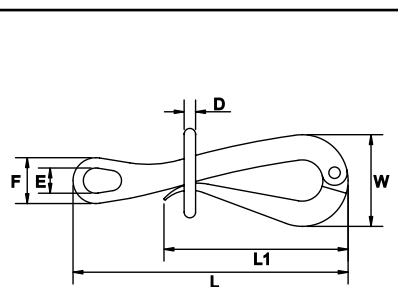
**SPRING HOOK W/EYELET & NUT AISI 316**

Code	S	L	E	D	MWL
2450NX-08	8	77	11	11.5	220
2450NX-10	10	100	14	14	290

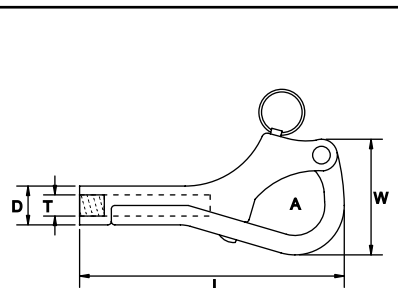


**PELICAN HOOK AISI 316**

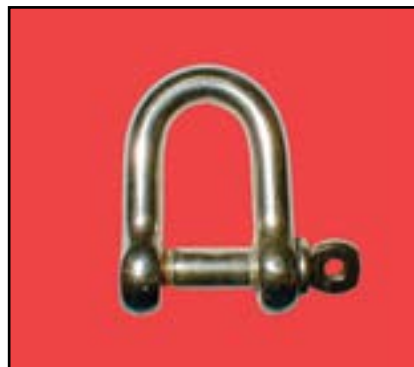
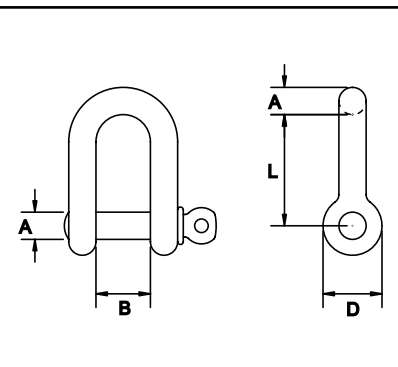
Code	L	L1	W	E	F	D
890-100	100	75	40	10	20	5
890-150	150	110	48	13	25	7

**PELICAN HOOK With Internal Thread AISI 3**

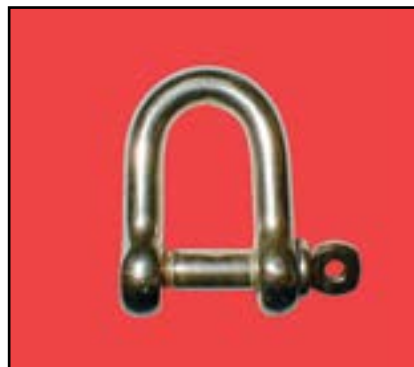
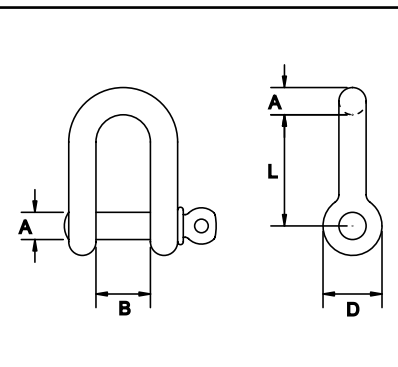
Code	L	W	A	D	T
2831-06	76	28	13	11	M6
2831-08	100	36	15	13	M8

**STANDARD DEE SHACKLE AISI 316**

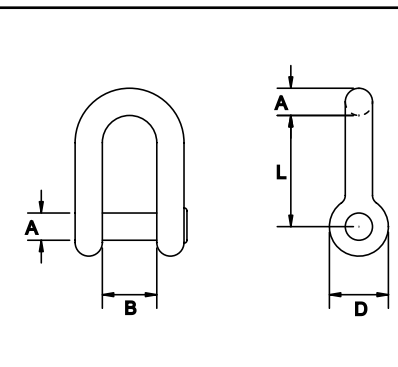
Code	A	B	L	D	MWL
360-04	4	8.5	18	8.3	138
360-05	5	11	22	10.5	250
360-06	6	14	24	12	425
360-08	8	17	32	16	625
360-10	10	20	40	19	1025
360-12	12	24	48	23	1350
360-16	16	31	56	29	2200
360-19	19	35	74	37	2500
360-22	22	39	85	43	
360-24	24	47	97	48	

**DEE SHACKLE With Captive Pin AISI 316**

Code	A	B	L	D	MWL
360LK-06	6	12	24	12	425
360LK-08	8	16	32	15	625
360LK-10	10	20	40	19	1025

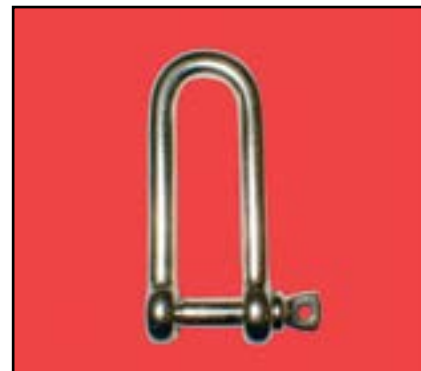
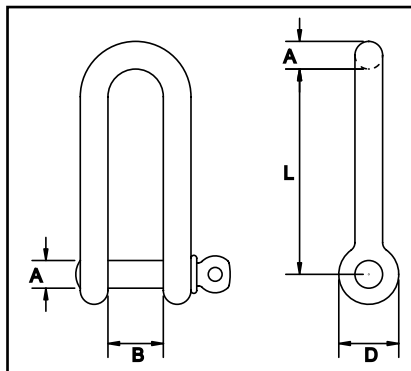
**DEE SHACKLE Sink Pin Slotted Head AISI 31**

Code	A	B	L	D	MWL
360C-06	6	12	24	12	425
360C-08	8	16	32	15	625
360C-10	10	20	40	19	1025
360C-12	12	24	48	23	1350

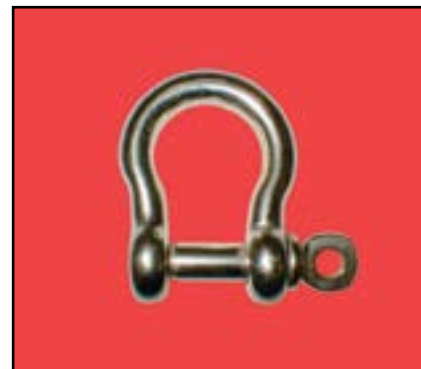
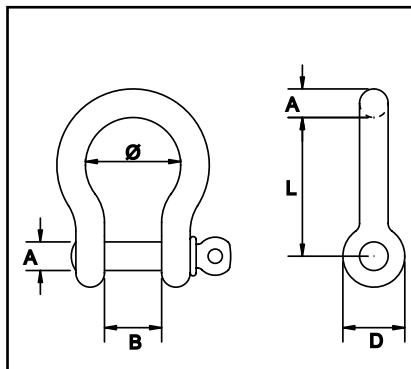


**LONG DEE SHACKLE AISI 316**

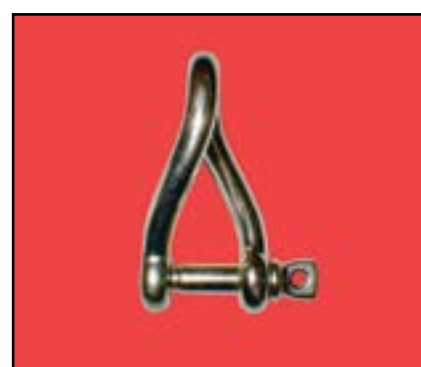
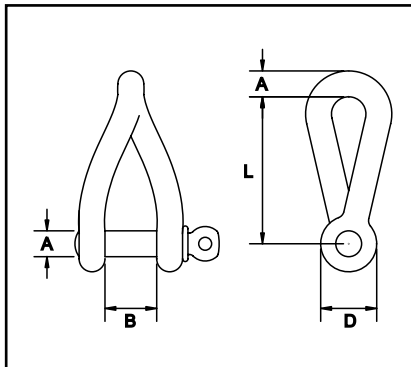
Code	A	B	L	D	MWL
362-05	5	10	39	11	250
362-06	6	12	47	12	450
362-08	8	16	62	15	688
362-10	10	20	77	20	813

**BOW SHACKLE AISI 316**

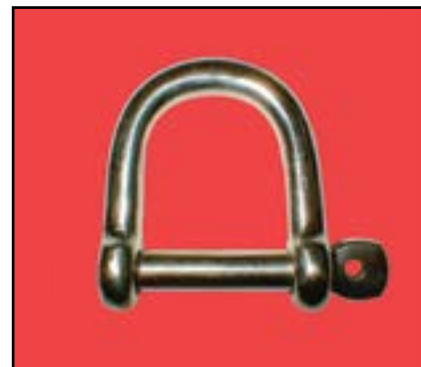
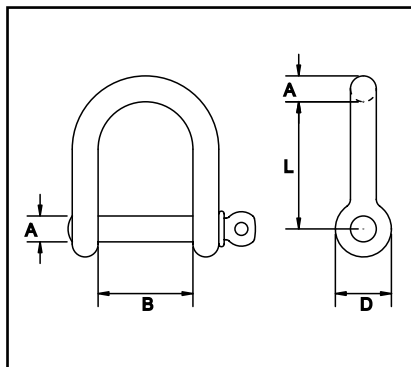
Code	A	B	L	D	Ø	MWL
370-06	6	12	27	12	18	425
370-08	8	16	36	16	24	625
370-10	10	20	45	20	30	1075
370-12	12	25	54	24	36	1550

**TWISTED SHACKLE AISI 316**

Code	A	B	L	D	MWL
380-06	6	12	40	12	400
380-08	8	16	46	16	700
380-10	10	20	60	20	1150
380-12	12	25	74	24	1500

**WIDE MOUTH SHACKLE AISI 316**

Code	A	B	L	D	MWL
360W-06	6	27	30	12	400
360W-08	8	29	35	16	700
360W-10	10	41	60	20	1150
360W-12	12	48	72	28	1500



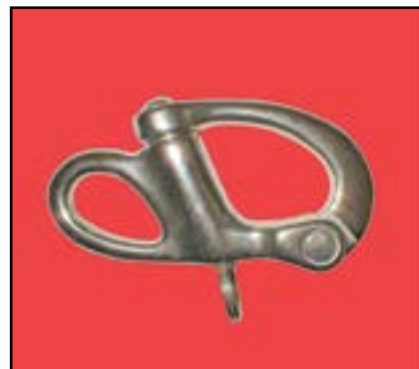
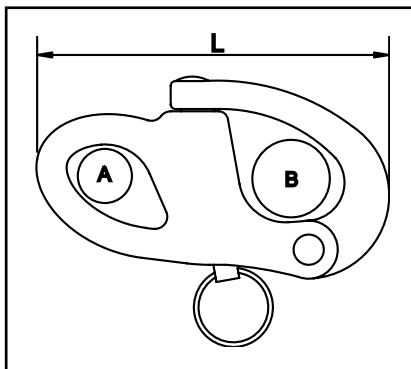
**DURABLE AND  
VERSATILE  
STAINLESS STEEL  
SHACKLES TO SUIT  
ANY APPLICATION.**



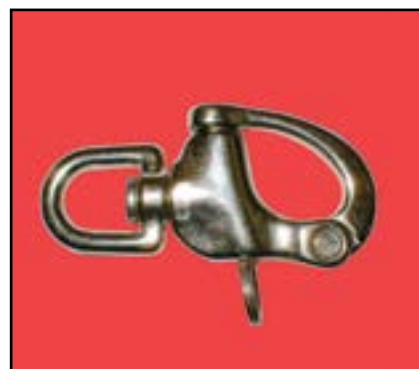
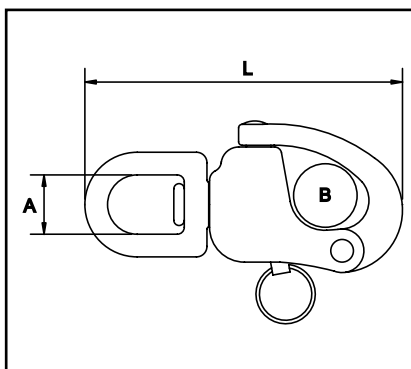


**FIXED EYE SNAP SHACKLE AISI 316**

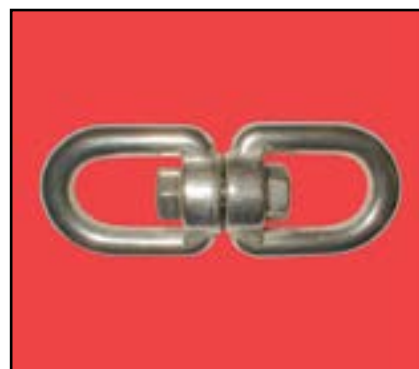
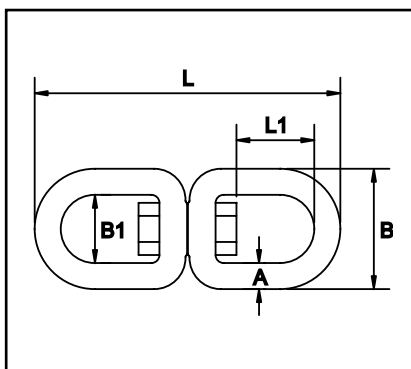
Code	A	B	L	MWL
2481-01	9	12	52	275
2481-02	12	16	66	500
2481-03	16	22	96	875

**SWIVEL EYE SNAP SHACKLE AISI 316**

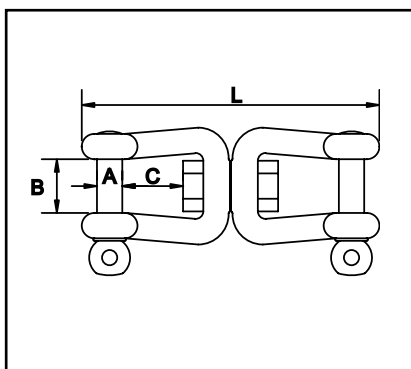
Code	A	B	L	MWL
2482-01	12	12	70	275
2482-02	16	16	87	500
2482-03	22	22	120	875

**SWIVEL EYE + EYE AISI 316**

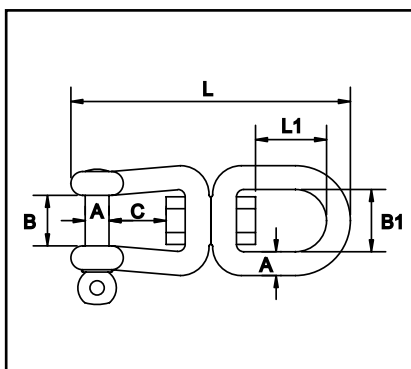
Code	A	L	L1	B	B1	MWL
018-06EE	6	65	15	26	15	300
018-08EE	8	90	22	35	20	475
018-10EE	10	115	27	44	24	875
018-13EE	13	154	28	48	25	1250

**SWIVEL JAW + JAW AISI 316**

Code	A	B	C	L	MWL
018-06EE	6	12	11	66	300
018-08EE	8	16	16	94	475
018-10EE	10	20	22	118	875
018-13EE	13	26	28	152	1250

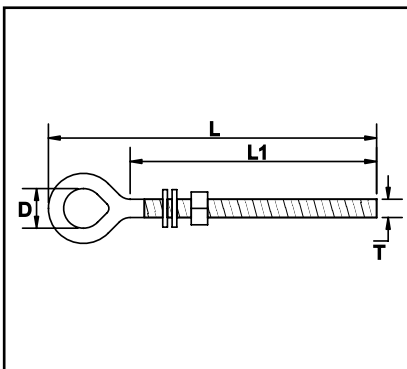
**SWIVEL JAW + EYE AISI 316**

Code	A	B	B1	C	L	L1	MWL
018-06EJ	6	12	15	11	66	15	300
018-08EJ	8	16	20	16	94	22	475
018-10EJ	10	20	24	22	118	27	875
018-13EJ	13	26	32	28	152	28	1250

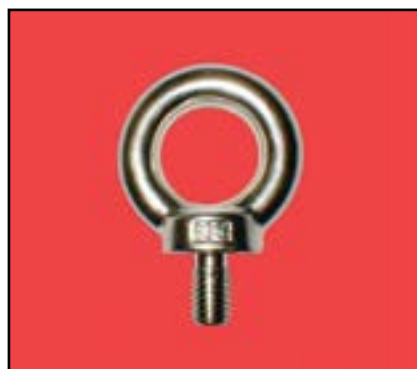
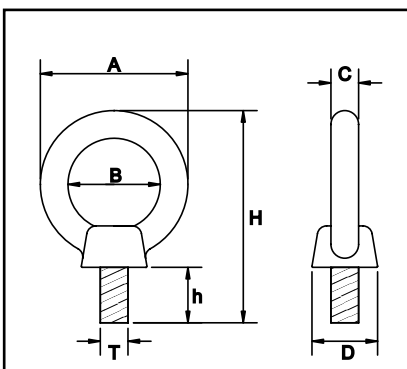


**LONG EYE BOLT With Nut & Washers AISI 304**

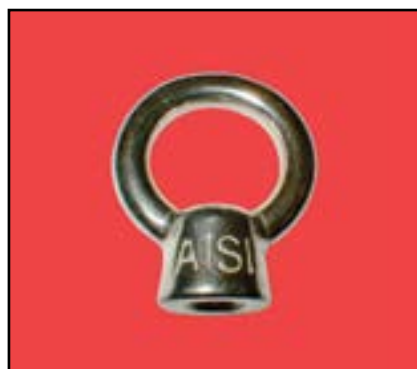
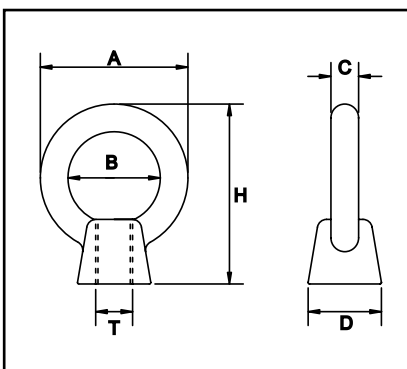
Code	T	D	L	L1	MWL
3191-640	6	16	70	40	250
3191-660	6	16	89	60	250
3191-680	6	16	109	80	250
3191-880	8	17	110	80	450
3191-810	8	17	138	100	450
3191-1012	10	22	165	120	600
3191-1212	12	25	172	120	875

**EYE BOLT With Collar AISI 316**

Code	T	A	B	D	H	H	MWL
580-06	M6	26	16	12	40	13	275
580-08	M8	36	20	19	50	13	450
580-10	M10	45	25	25	63	17	675
580-12	M12	54	30	30	73	21	850
580-16	M16	63	35	36	91	28	2000
580-20	M20	72	40	40	107	31	2625
580-24	M24	90	50	52	122	41	3000

**EYE NUT W/COLLAR AISI 316**

Code	T	A	B	D	H	MWL
3061-06	M6	26	16	12	28	275
3061-08	M8	36	20	19	36	450
3061-10	M10	45	25	25	45	675
3061-12	M12	54	30	30	53	850
3061-16	M16	63	35	36	62	2000
3061-20	M20	72	40	40	71	2625
3061-24	M24	90	50	52	90	3000

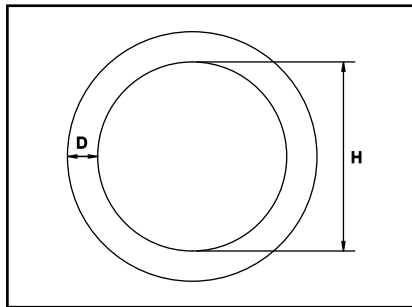


***Stainless Steel  
Eye Bolts  
and  
Eye Nuts  
for Shade Sails,  
Balustrading,  
or any project.***

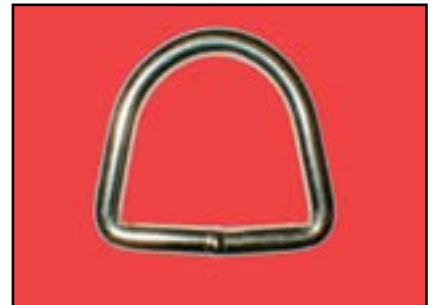
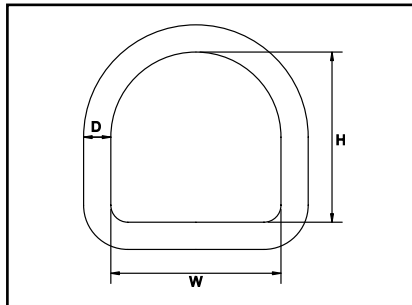


**ROUND WELDED RING AISI 304**

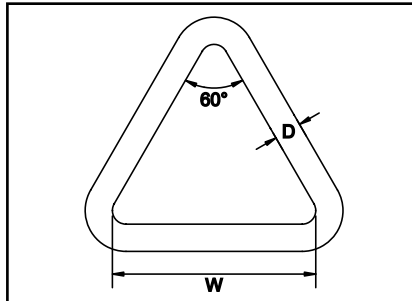
Code	D	H	MWL
1717-425	4	25	250
1717-530	5	30	500
1717-640	6	40	675
1717-650	6	50	675
1717-855	8	55	1250
1717-875	8	75	1250
1717-1075	10	75	2125

**DEE WELDED RING AISI 304**

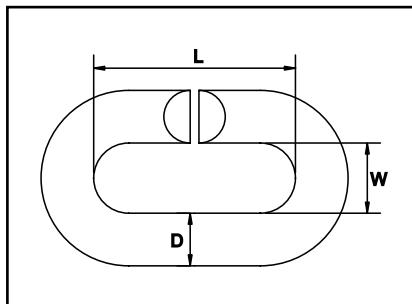
Code	D	H	W	MWL
325-425	4	22	25	200
325-640	6	35	40	450
325-650	6	45	50	450
325-850	8	45	50	700

**TRIANGULAR WELDED RING AISI 304**

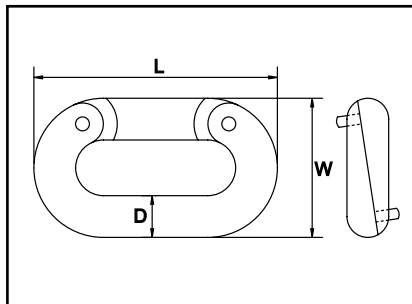
Code	D	H	W	MWL
325T-650	6	45	50	500
325T-850	8	45	50	700

**"C" LINK AISI 316**

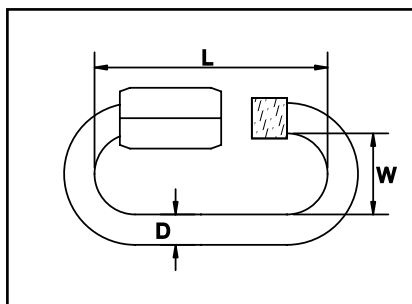
Code	D	W	L
10C-06	6	8	22
10C-08	8	10	30
10C-10	10	16	50
10C-12	12	18	65
10C-16	16	21	72
10C-19	19	24	80

**CHAIN CONNECTING LINK AISI 316**

Code	D	W	L
661-08	8	28	40
661-10	10	34	48
661-11	11	38	55
661-13	13	42	62

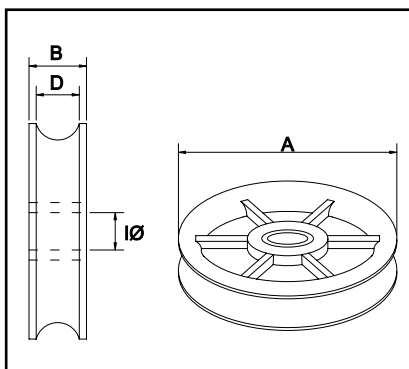
**QUICK LINK AISI 316**

Code	D	L	W	MWL
7350-04	4	40	12	225
7350-05	5	49	13	300
7350-06	6	57	14	400
7350-08	8	76	18	700
7350-10	10	89	22	1050

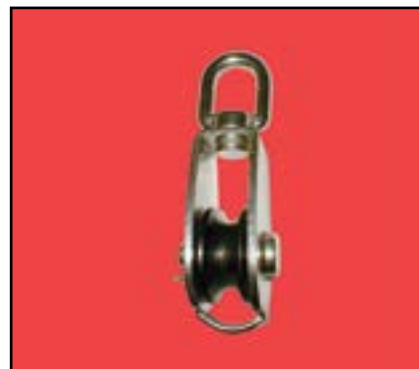
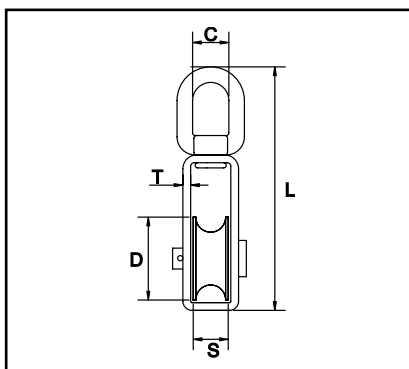


**SHEAVE With Brass Bushing AISI 316**

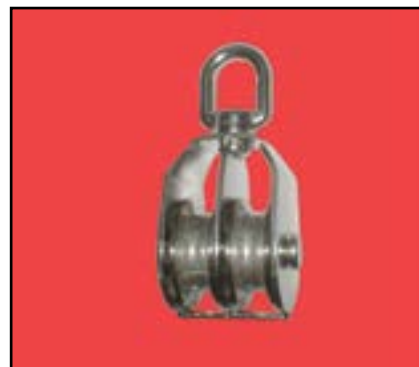
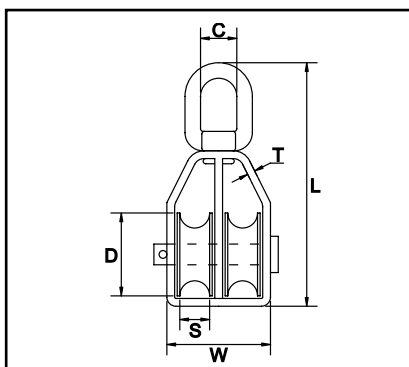
Code	A	B	IØ	D
3130-50	50	19	10.6	15
3130-75	75	20	13.6	16
3130-100	100	26	17.3	18
3130-125	125	27	17.6	20

**SINGLE SHEAVE SS PULLEY AISI 316**

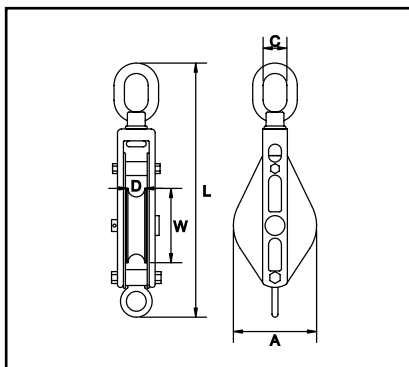
Code	D	S	T	C	L	MWL
3141-32S	32	15	2	17	104	450
3141-50S	50	20	2.5	19	143	875

**DOUBLE SHEAVE SS PULLEY AISI 316**

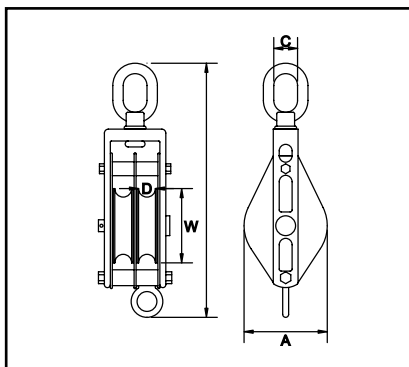
Code	D	W	S	T	C	L	MWL
3141-32D	32	42	15	2	17	104	375
3141-50D	50	54	20	2.5	19	143	625

**SINGLE SHEAVE TRAWL BLOCK AISI 316**

Code	W	D	A	C	L	MWL
210-75E	75	16	80	25	256	1125
210-100E	100	19	110	25	315	1625

**DOUBLE SHEAVE TRAWL BLOCK AISI 316**

Code	W	D	A	C	L	MWL
210-75ED	75	16	80	25	256	1125
210-100ED	100	19	110	25	315	1625





**CLICK THIS  
IMAGE TO  
GO TO  
THE FULL  
CATALOGUE**



**CLICK THIS  
IMAGE TO  
RETURN  
TO THE  
WEBSITE  
HOME PAGE**

