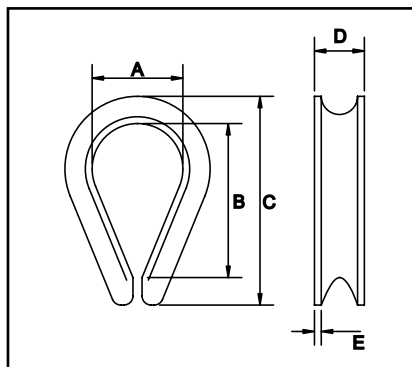


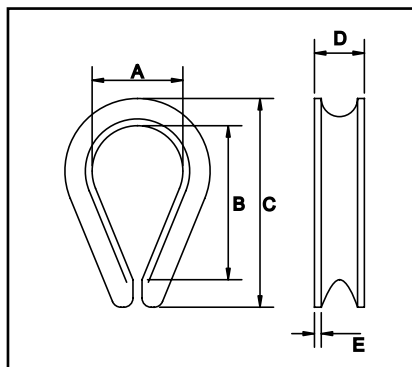
SS WIRE ROPE THIMBLE AISI 316

Code	Rope Ø	A	B	C	D	E
SS234-02	2	9	15	21	5	1
SS234-02½	2.5	9.5	15.5	22	5	1
SS234-03	3	10	16	23	6	1
SS234-04	4	11	17	27	7	1
SS234-05	5	13	20	31	8	1
SS234-06	6	16	25	39	9.5	1.25
SS234-07	7	18	28	42	10	1.25
SS234-08	8	20	32	50	12	1.5
SS234-10	10	26	40	59	14	1.5
SS234-12	12	28	45	70	17.5	1.75
SS234-14	14	34	56	76	20	2
SS234-16	16	37	62	85	21	2



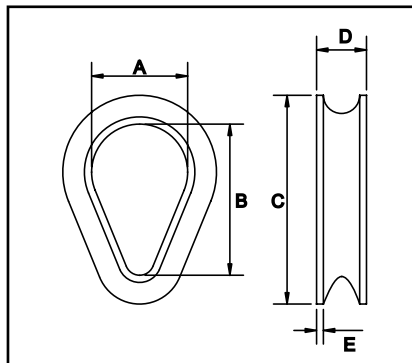
SS WIRE ROPE THIMBLE Heavy Duty AISI 316

Code	Rope Ø	A	B	C	D	E
SS414-06	6	21.5	40	54	10	1.5
SS414-08	8	26	46.5	62	13	2
SS414-10	10	28	52.5	71	16	2.7
SS414-11	11	31	59	80.5	19	3
SS414-13	13	37	68	91	21	3.5
SS414-14	14	37	68	91.5	21	3.5
SS414-16	16	43.5	80.5	105	25	4



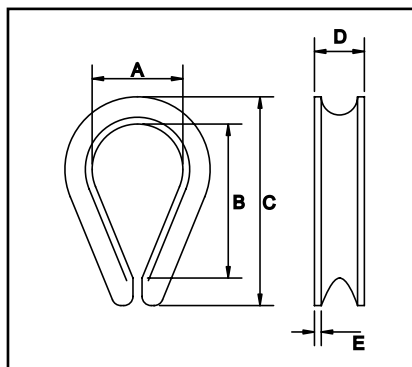
SS SAILMAKERS THIMBLE AISI 316

Code	Rope Ø	A	B	C	D	E
CP-225	2.5	8	14	20	4.5	0.8
CP-230	3	11	16.5	22.5	5	0.8
CP-240	4	13.5	19	27	7	1
CP-250	5	16	22	32	8	1.5
CP-260	6	18.5	25.5	36	10	1.5
CP-280	8	23	33.5	45	12	1.5



GALVANISED WIRE ROPE THIMBLE

Code	Rope Ø	A	B	C	D	E
BS464-04	4	13	20	32	7	1
BS464-06	6	18	37	48	10	1
BS464-08	8	22	34	54	13	2
BS464-10	10	24	39	61	15	2
BS464-12	12	31	48	77	20	3
BS464-16	16	41	58	95	22	3
BS464-20	20	51	73	120	28	3
BS464-22	22	54	90	138	35	5
BS464-24	24	65	95	150	35	5



SUPERMAX ROPE

Code	Weight	Ø
10231	2.5kg / 100m	6mm
10232	4.1kg / 100m	8mm
10232A	5.0kg / 100m	9mm
10233	5.9kg / 100m	10mm
10233A	7.1kg / 100m	11mm
10234	9.5kg / 100m	12mm
10235	13.7kg / 100m	14mm

The Strongest Fibre Rope in the World

Ultra high molecular weight polyethylene (UHMWPE) fibre braided rope. SuperMax is stronger than wire rope of same diameter, and it weighs 1/8 of wire rope.

Suitable for lifting slings, tow ropes, nets, heaving ropes and tug ropes.



**CLICK THIS
IMAGE TO
GO TO
THE FULL
CATALOGUE**



**CLICK THIS
IMAGE TO
RETURN
TO THE
WEBSITE
HOME PAGE**

